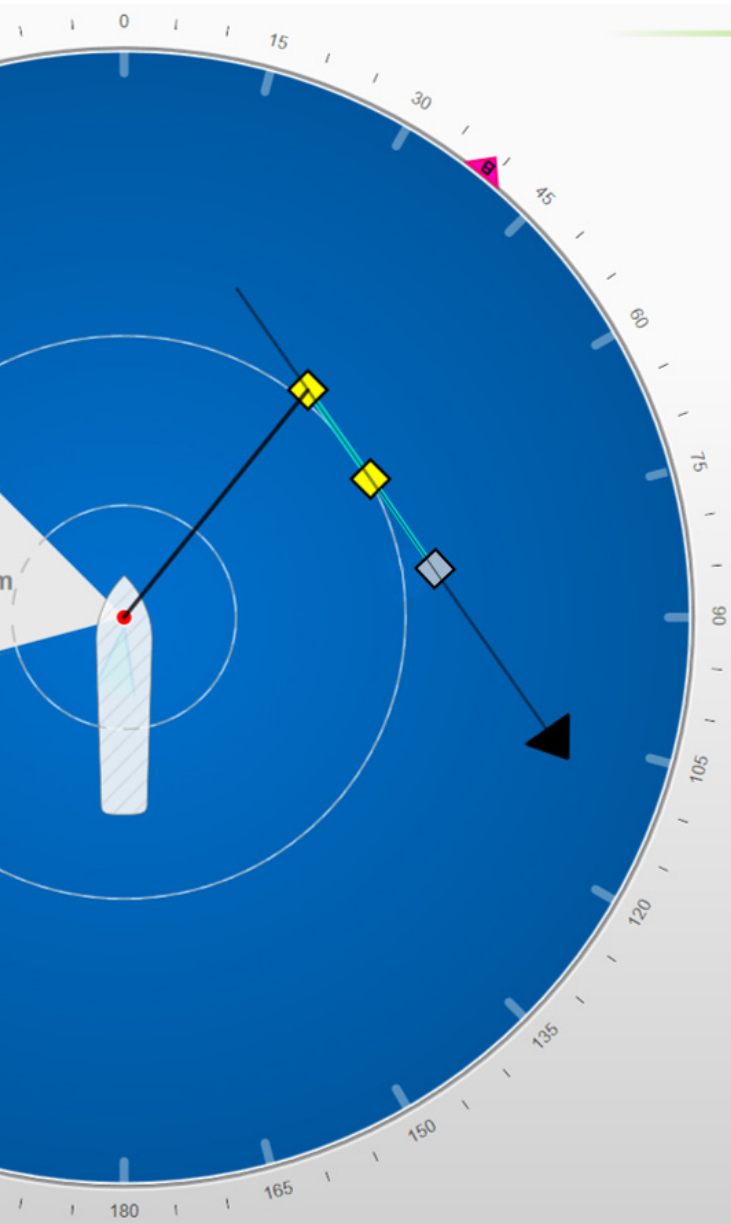


Wärtsilä CyScan AS

The safest laser of choice



The CyScan AS system provided by Guidance Marine is a high performance local position reference sensor specifically engineered for marine Dynamic Positioning (DP) applications. Absolute Signature (AS) resolves long-standing, common industry challenges by providing an improved performance during target identification, acquisition and tracking.



Benefits

- Positively identifies AS targets
- Longest range DP laser sensor on the market today
- Ability to add additional targets to a multi-target session without interrupting tracking
- Field proven false target reflection rejection
- Plug and play legacy and competitor upgrade package available

Typical applications

CyScan AS is suitable for applications which use fixed structures such as:

- Platform, offshore and multipurpose supply vessel operations
- Wind farm service operation vessels
- Jack-up rigs
- Accommodation barge operation
- Crew boats station-keeping
- Heavy lift activities
- Dive and ROV support
- Short range operations

CyScan AS is also suitable for DP applications mobile structures such as:

- Track and ship follow



Main data

Sensor Details	
Laser Source	Pulsed laser diodes
Laser Classification	Class 1M
Operating Range (nominal)	10 - 2500m (dependent on target size and atmospheric conditions)
Range Resolution	0.01m (DP feed dependent)
Range Noise	50mm*
Bearing Noise	0.2 mrad
Beam Shape	12° vertical 0.13° horizontal
Total Vertical Coverage	52°
Wave Motion Compensation	Single axis gimbel +/- 20° absolute range
Maximum Detectable Targets	30
Maximum Trackable Targets	9

Target Details	
Typical Range	1.9m cylindrical 10m to 400m
	Prism 10m to 2500m (target type / absolute signature technology dependent)

Vessel Interface	
Sensor Power	85-264VAC max 100W
Sensor Control Electrical Interface	Ethernet 100Base-T or Serial RS422
Sensor Control Software	Up to 10 simultaneous consoles (Ethernet) Single control console serial connected sensors
Sensor DP Feed	2 x RS422 (Ethernet controlled sensors) or 1 x RS422 (serial connected sensor)
Supported DP Telegram Formats	NMEA0183R NMEA0183P ASCII17 MDL standard
Custom DP Telegrams	BCD Artemis Marine Technologies Rolls Royce

Levelling Optics	
Active Axis	Single axis with automatic dynamic stepper control
Tilt Compensation	-20° to +20° roll and pitch (combined)
Sensors	3 axis solid state gyro and accelerometers
	2 axis inclinometer
Total Vertical Angular Coverage (typical)	52° (mechanical + optical)
Wave Motion Compensation	±5° for 5 second wave period

Flight Case Weight & Dimensions	
System Dimensions	680 x 570 x 910mm
System Weight	ca. 78kg (typical accessories)

Environmental	
Operating Temperature Range	Min: -25°C Max: 55°C
Ingress Protection Rating	IP66 rated
Standards Compliance	EN60945 IEC60825
Ingress Protection Rating	IP66

Sensor Weight & Dimensions	
Width	405mm
Depth	407mm
Height	565mm
Weight	28kg

"CyScan" is a registered trademark of Wärtsilä Guidance Marine Ltd. All other brand or product names are trademarks or registered trademarks of their respective companies or organisations.

wartsila.com/marine/build/dynamic-positioning/cyscan-as
sales.wgm@wartsila.com

WÄRTSILÄ® is a registered trademark. Copyright © 2020 Wärtsilä Corporation.
 Specifications are subject to change without prior notice.

