

# Next generation white metal technology

Improving applications across the marine industry

PRODUCT DATASHEET

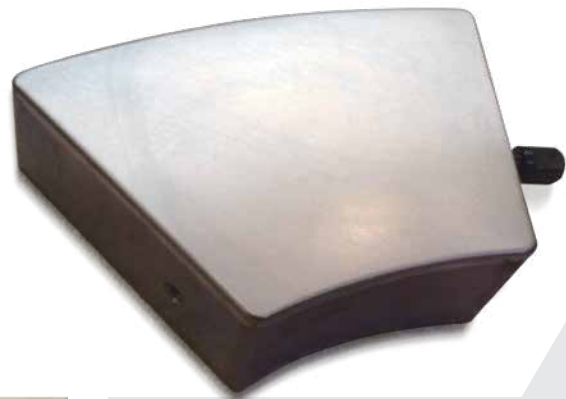


As world leaders in advanced white metal technology and with more than 30 years of experience, Wärtsilä can repair and upgrade any specifications of white metal bearings and pads for a vast range of industrial applications, using the most advanced technology in the industry.

## Design, repair and upgrade services

Wärtsilä's services and capabilities are on a global scale and provide design, repair and upgrades for white metal bearings in the following industries:

- Marine
- Mining
- Petroleum
- Power generation
- Pulp and paper
- Nuclear.



## APPLICATIONS LIST

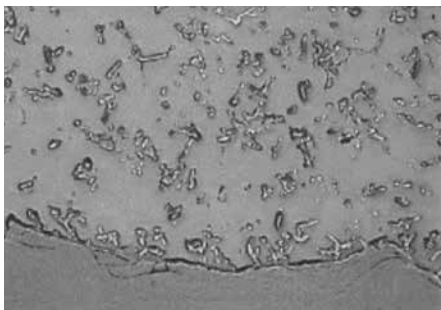
Our white metal technology increases the performance and lifetime of applications, while minimising downtime.

- Generator bearings
- Vertical bearings
- Thrust pads
- Gearboxes
- Stone crushers, grinders and mills.

Improved performance. **Longer lifetimes.** Minimal downtime.

# Next generation white metal technology

FEATURES	ADVANTAGES	BENEFITS
Cutting-edge white metal laser technology.	Suitable for many white metals across the marine industry to make a real technological difference.	Improves mechanical and tribological properties.
Refined microstructure.	Exceptional bonding strength in the upper range as standard.	Lowers chance of premature component failure and minimizes operational risk.
Fully tested and proven.	Tests who that layers of white metal capable of withstanding far more stress.	Improvements of up to 40% in mechanical bonding and fatigue resistance compared to regular casting procedures.
Environmentally, friendly, sustainable solution.	Rapid service from Wärtsilä, delivering improved results.	Adheres to environmental regulations.



Standard procedure

200µm



Our next generation white metal technology

200µm

## TECHNICAL SPECIFICATION

Characteristics	Traditional	Wärtsilä advanced white metal technology
Hardness HBW 10/250/180 at 20°C	22	27
Qualification bonding	> 62 MPa	> 90 MPa
Mechanical properties	★★★	★★★★★
Tribological properties	★★★★★	★★★★★
Repeatability	★★★	★★★★★
Microstructure	Coarse	Very refined

An industry leader in shaft line components Wärtsilä Shaft Line Solutions delivers a portfolio of end-to-end services and integrated solutions for the marine markets that builds on our core values: lifecycle efficiency, risk reduction, environmental leadership and design excellence. As an original equipment manufacturer operating in 75 countries, we have the capabilities to support customers on a global scale, and remain committed to providing in-country and round-the-clock expertise.



[wartsila.com/shaft-line-solutions](https://www.wartsila.com/shaft-line-solutions)

WÄRTSILÄ® is a registered trademark. Copyright © 2020 Wärtsilä Corporation. Specifications are subject to change without prior notice.