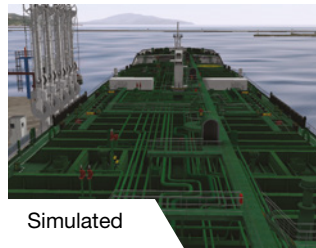


Liquid Cargo Handling Simulator

LCHS 5000

Product Tanker



Prototype – Product Tanker

Tanker is designed to carry five types of different cargoes simultaneously, including crude oil and oil products in 10 different cargo tanks.

Tonnage and Dimensions

| | |
|-----------------|------------|
| DWT (12.2) | 47 400 tns |
| Length Overall | 182.50 m |
| Length B.P. | 174.80 m |
| Breadth moulded | 32.20 m |
| Depth moulded | 17.50 m |

Cargo Handling

| | |
|-------------------------------|--------------------------|
| Cargo tanks (inc. slop tanks) | 54 298 m ³ |
| Ballast tanks | 21 726 m ³ |
| Cargo hydraulic pumps | 12×550 m ³ /h |
| Ballast hydraulic pumps | 2×1000 m ³ /h |
| Depth moulded | Steam, 80° |

Simulated Systems

- Cargo handling System
- Deep Well Pumps Control Panel
- Oil discharge monitoring equipment (ODME) System
- Loading control system
- Ballast System
- Deck Wash and Firefighting System
- Gas Detection System
- Tank Heating System
- Crude Oil Washing System
- Inert Gas Systems

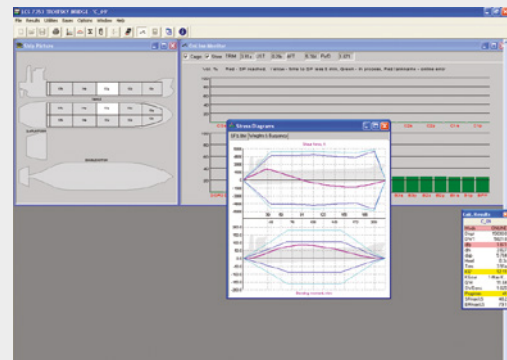
Simulator Components

The cargo control console and terminal control console comprise of:

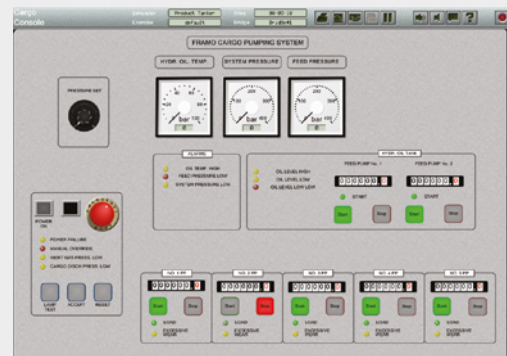
- Panels, imitating the real equipment of Cargo Control Room of the ship
- Panels, imitating the screens of Cargo Monitoring System software, installed on the ship
- Interactive scalable drawings of the systems and subsystems used in ballast handling operations
- Interactive 3D visualization of the ship with a possibility to control deck equipment
- 3D visualization of the pictures presented by the ship/pier CCTV System cameras
- 3D visualization channels of the view from cargo control room window
- Loading Control System

Joint Operation with Engine Room Simulator

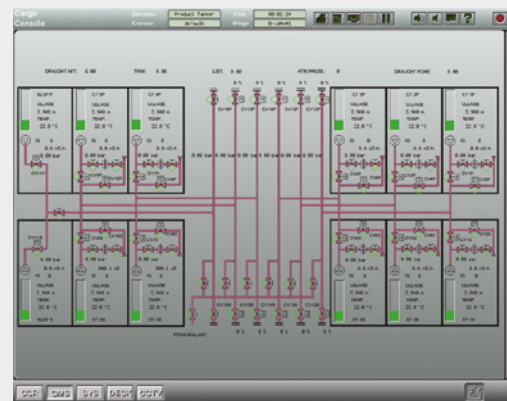
- Power generation \ consumption
- AUX machinery and subsystems
- Heat supply (steam) for cargo system
- Fire fighting system



Load Calculator



Deep Well Pumps Control Panel



Cargo System CMS Screen



Interactive 3D visualisation of the deck