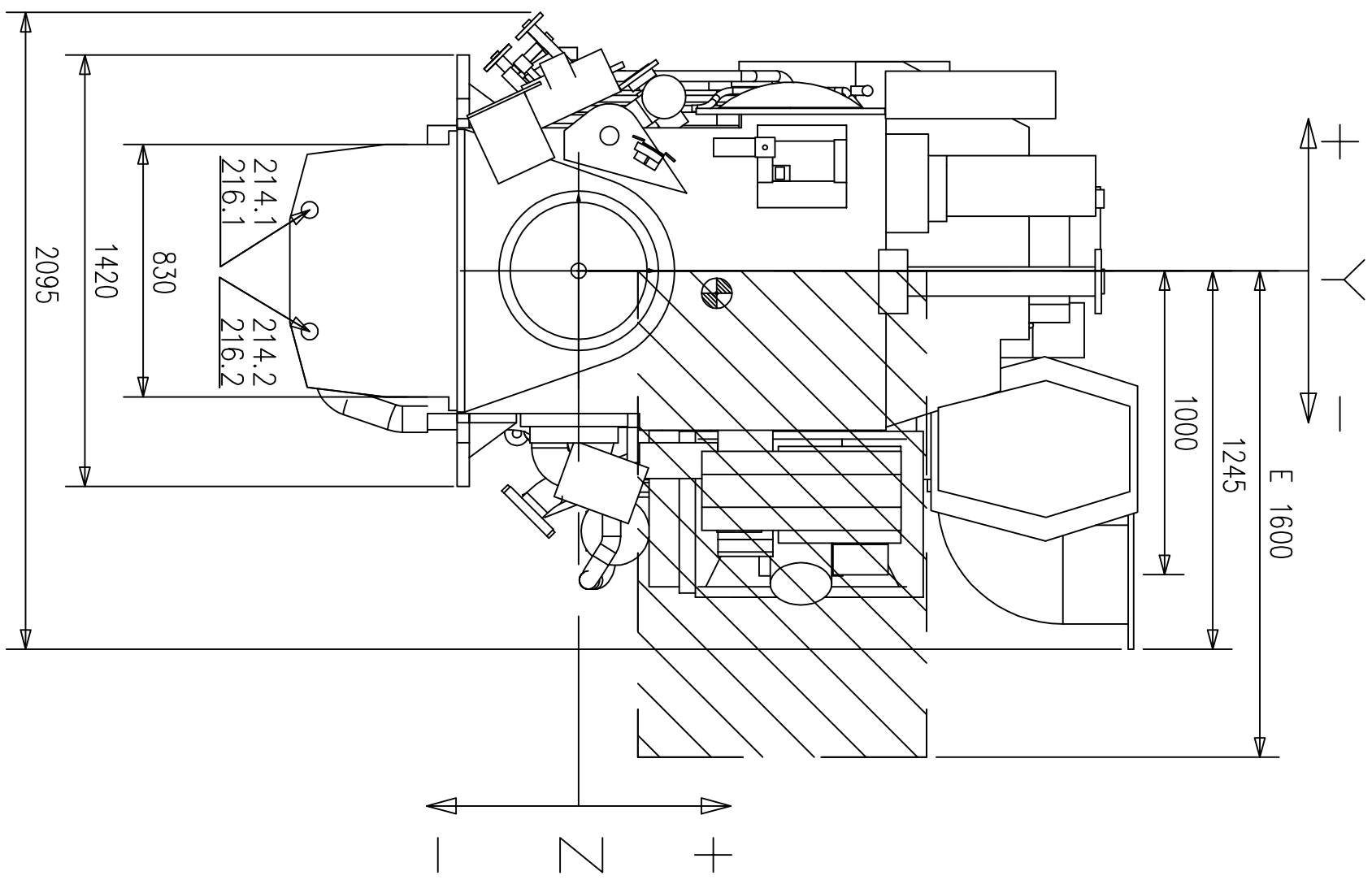


CENTER OF GRAVITY

 Pääntö/WEIGHTS (TOL. ±5%)

 DIESEL ENGINE (WET WEIGHT) W91.26 : 24660 kg

Code	Explanation
101	FUEL INLET (LFO)
102	FUEL OUTLET
103.1	LEAK FUEL DRAIN, CLEAN FUEL
103.2	LEAK FUEL DRAIN, CLEAN FUEL
104.1	LEAK FUEL DRAIN, DIRTY FUEL
104.2	LEAK FUEL DRAIN, DIRTY FUEL
105	FUEL STAND-BY CONNECTION
111	DRAIN FROM FUEL FILTER DRIP TRAY
114	FUEL FROM STARTING/DAY TANK
207	LUBE OIL TO EL DRIVEN PUMP
208	LUBE OIL FROM EL DRIVEN PUMP
213.1	LUBE OIL FROM SEPARATORAND FILLING
213.2	LUBE OIL FROM SEPARATORAND FILLING
214.1	LUBE OIL TO SEPARATOR AND DRAIN
214.2	LUBE OIL TO SEPARATOR AND DRAIN
216.1	LUBE OIL DRAIN
216.2	LUBE OIL DRAIN
221	LUBE OIL OVERFLOW
301	STARTING AIR INLET
304	SPEED SETTING AIR TO GOVERNOR
401	HT-COOLING WATER INLET
402	HT-COOLING WATER OUTLET
404.1	HT WATER AIR VENT
404.2	HT WATER AIR VENT
405	HT WATER TO PREHEATER
406	HT WATER FROM PREHEATER
407	HT WATER TO STAND-BY-PUMP
408	HT WATER FROM STAND-BY-PUMP
451	LT-WATER INLET
452	LT-WATER OUTLET
454	LT WATER AIR VENT
456	LT WATER TO STAND-BY PUMP
457	LT WATER FROM STAND-BY PUMP
481	WATER INLET
482	WATER OUTLET
501	EXHAUST GAS OUTLET
502	CLEANING WATER TO TURBINE
601	AIR INLET TO TURBOCHARGER
607	CONDENSATE FROM COOLER
701	CRANKCASE AIR VENT



- A. Height needed for overhauling piston and connecting rod.
- B. Height needed for transporting piston and connecting rod freely over exhaust gas insulation box.
- C. Distance needed to dismantle pump cover with fitted pumps.
- D. Axial clearance for dismantling & assembly of silencers.
- E. Width needed for dismantling charge air cooler.

		© Wärtsilä Finland Oy Ship Power		W91.26 ENGINE OUTLINE AND SERVICE SPACE T/C AT FREE END LFO FUEL TYPE WET SUMP		PART CLASS.	-
Product	W91.26	DESIGN	W-SP	SCALE	1:20	SIZE	A1
MADE	14.08.2007	SCALE	1:20	SIZE	A1	NO.	DAAE038735
QND		SCALE	1:20	SIZE	A1	NO.	DAAE038735
APPD		SCALE	1:20	SIZE	A1	NO.	DAAE038735