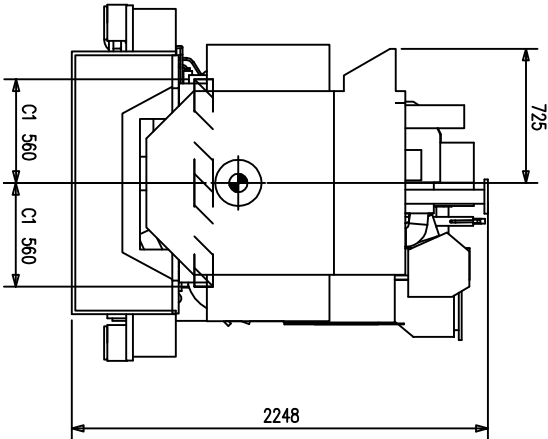
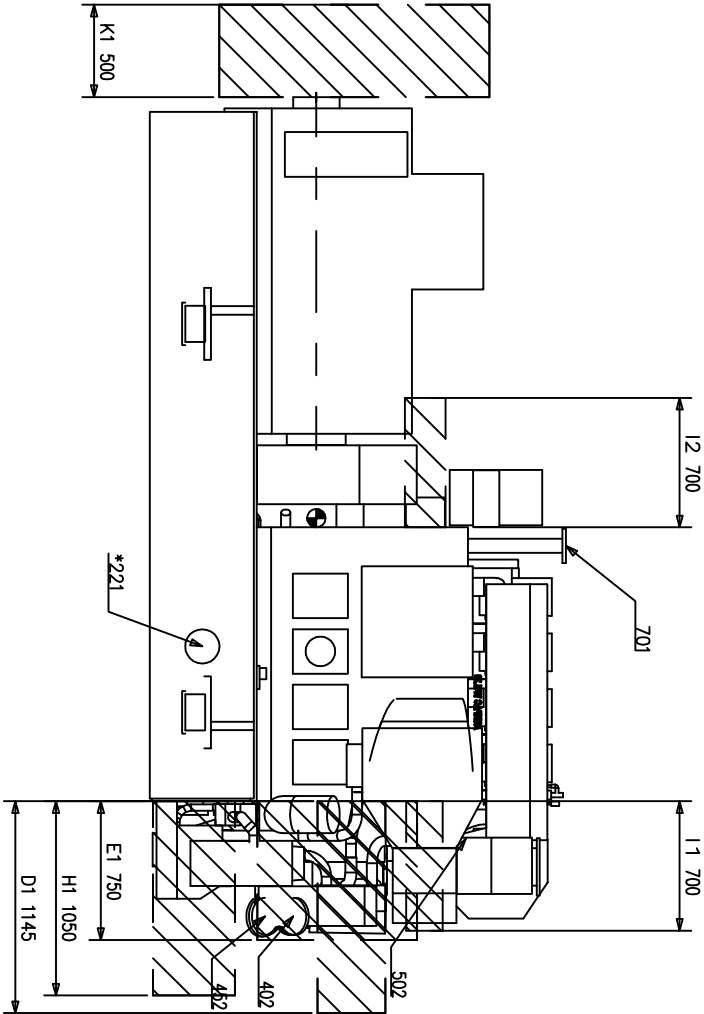


● CENTER OF GRAVITY

* = Optional

Pinpoint./WEIGHTS (TOL. $\pm 2.5\%$)
DIESEL ENGINE (DRY WEIGHT) W4L20 : 14200 Kg

Code	Explanation
101	FUEL INLET
102	FUEL OUTLET
103	LEAK FUEL DRAIN, CLEAN FUEL
104	LEAK FUEL DRAIN, DIRTY FUEL
213	LUBE OIL FROM SEPARATOR AND FILLING
214	LUBE OIL TO SEPARATOR AND DRAIN
221	LUBE OIL FLOW
301	STARTING AIR INLET
401	HT-WATER INLET
402	HT-WATER OUTLET
404	HT-WATER AIR VENT
406	HT-WATER FROM PREHEATER TO HT-CIRCUIT
451	LT-WATER INLET
452	LT-WATER OUTLET
454	LT-WATER AIR VENT
501	EXHAUST GAS OUTLET
502	CLEANING WATER TO TURBINE
701	CRANKCASE AIR VENT



- A1. Height needed for overhauling piston and connecting rod: 1800mm
A2. Height needed for transporting piston and connecting rod freely over adjacent cylinder head covers 2300mm
A3. Height needed for transporting piston and connecting rod freely over exhaust gas insulation box 4L:2230mm 6L:2300mm, 8L & 9L:2400mm.
B1. Width needed for dismantling charge air cooler and air inlet box by using lifting tool 1200mm
C1. Width needed for removing main bearing side screw 560mm
D1. Distance needed to dismantle lube oil pump 1145mm

- E1. Distance needed to dismantle water box cover: 750mm
F1. The recommended axial clearance for dismantling and assembly of silencers: 4L: 590mm, 6L: 650mm, 8L, 9L: 750mm
F2. Minimum axial clearance is 100mm
F3. Recommended distance for dismantling the gas outlet elbow: 4L: 890mm, 6L: 990mm, 8L, 9L: 1120mm.
H1. Distance needed for dismantling lube plate cooler: 1050mm
I1. Camshaft overhaul distance(free end): 4L: 700mm, 6L: 1000mm, 8L, 9L: 1300mm
I2. Camshaft overhaul distance(flywheel end): 4L: 700mm, 6L: 1000mm, 8L, 9L: 1300mm
K1. Service space for generator: 500mm

Wärtsilä		Wärtsilä Finland Oy Ship Power		DIESEL ALTERNATOR SET AUXPAC 645W4L20	
Product	W4L20-AUXPAC	UNITS	mm kg	W4L NO.	-
DATE	26.04.2007	W-SP	DESIGN GROUP	DRS.	NO.
OWN		SCALE	1:20	NO.	DAAE045657
APPD			A1	PART CLASS.	- -