



# WÄRTSILÄ 50SG GAS ENGINE GENERATING SET

The Wärtsilä 50SG is a four-stroke, spark-ignited gas engine generating set that works according to the lean-burn process. It features an 18V cylinder configuration.

Wärtsilä helps customers unlock the value of the energy transition by optimising their energy systems and future-proofing their assets. We offer flexible power plants, energy management systems, and storage, as well as engineering, procurement and construction (EPC) deliveries and full lifecycle support that ensure guaranteed performance.

## Key features

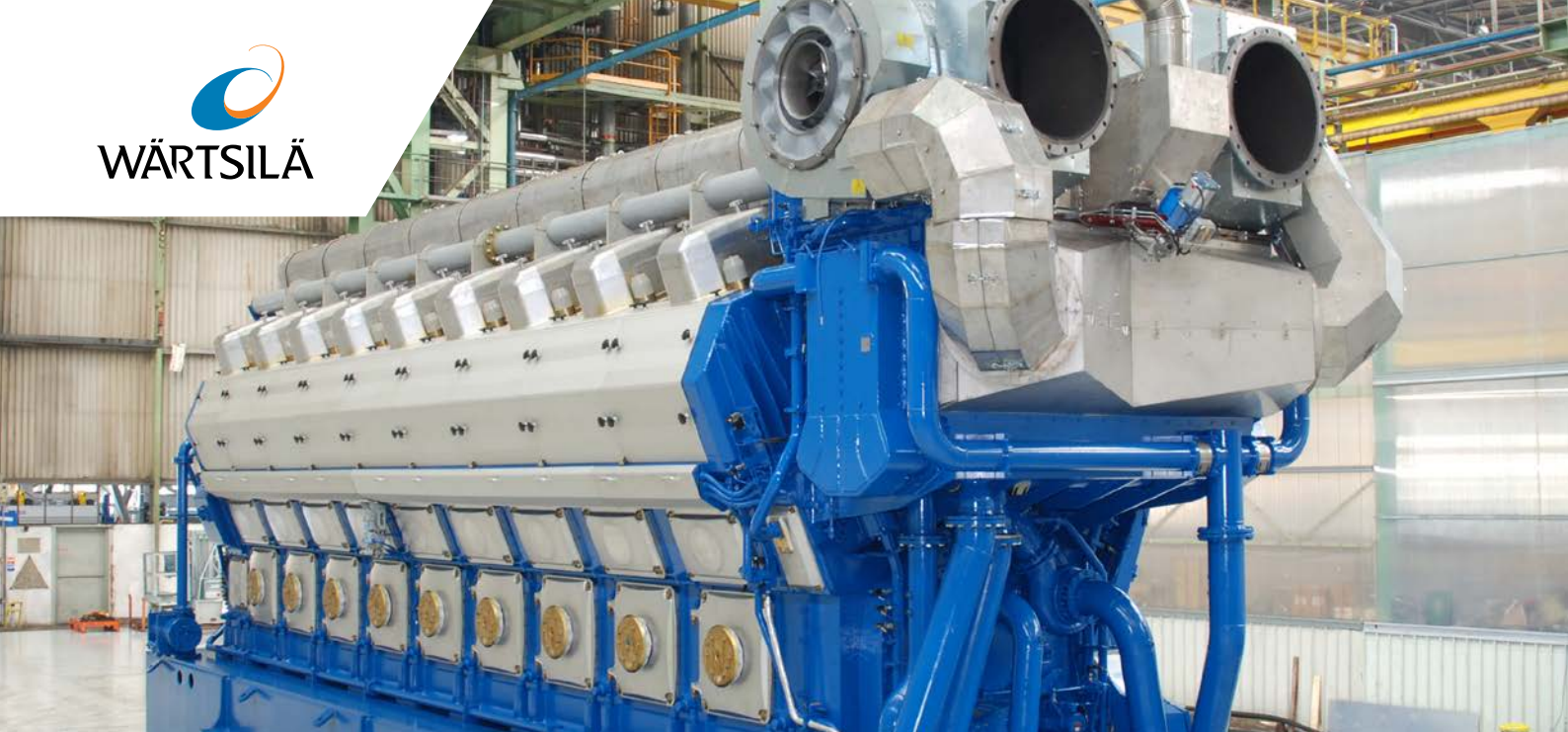
- Fast-starting capability which enables rapid response to fluctuations typical to renewable generation
- High net power plant electrical efficiency rating
- Low levels of emissions
- Optimised performance and efficiency supported by Wärtsilä Lifecycle solutions



**FOR FLEXIBLE BASELOAD,  
TRANSITION BASELOAD  
AND BALANCING  
RENEWABLES**



**LOW OVERALL  
LIFECYCLE COST**



## MAIN TECHNICAL DATA

Engine generating set, 50 & 60 Hz	
Cylinder configurations	18V
Cylinder bore	500 mm
Piston stroke	580 mm
Engine speed	500 rpm (50 Hz), 514 rpm (60 Hz)
Mean piston speed	9.7 m/s (50 Hz), 10 m/s (60 Hz)

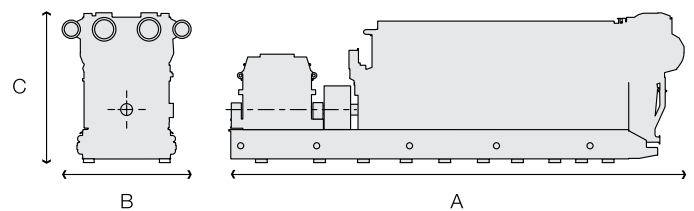
### Rated electrical power (kW)

Genset type	50 Hz	60 Hz
18V50SG	18 434	18 875

### Maximum transportation dimensions (mm) and weights (tonnes)<sup>1</sup>

Genset type	Length (A)	Width (B)	Height (C)	Dry weight
18V50SG	18 747	5 543	6 257	377

<sup>1</sup> There are a number of dismantling options available for transportation of the generator set. These include different options for reduced weight and height. Please contact Wärtsilä for further information.



**Disclaimer** The information contained herein is provided for informational purposes only and may not be incorporated, in whole or in part, into any agreement or proposal. No representation of any kind is made in respect of any information contained herein and Wärtsilä expressly disclaims any responsibility for, and does not guarantee, the correctness or the completeness of the information. The calculations and assumptions included in the information do not necessarily take into account all the factors that could be relevant in a particular case. Information herein shall not be construed as a guarantee or warranty of the performance of any Wärtsilä technology, equipment or installation.

[wartsila.com](http://wartsila.com)

The information in this document is subject to change without notice and the given data does not carry any contractual value. Wärtsilä assumes no responsibility for any errors that may appear in this document. WÄRTSILÄ® is a registered trademark. Copyright © 2020 Wärtsilä Corporation.

