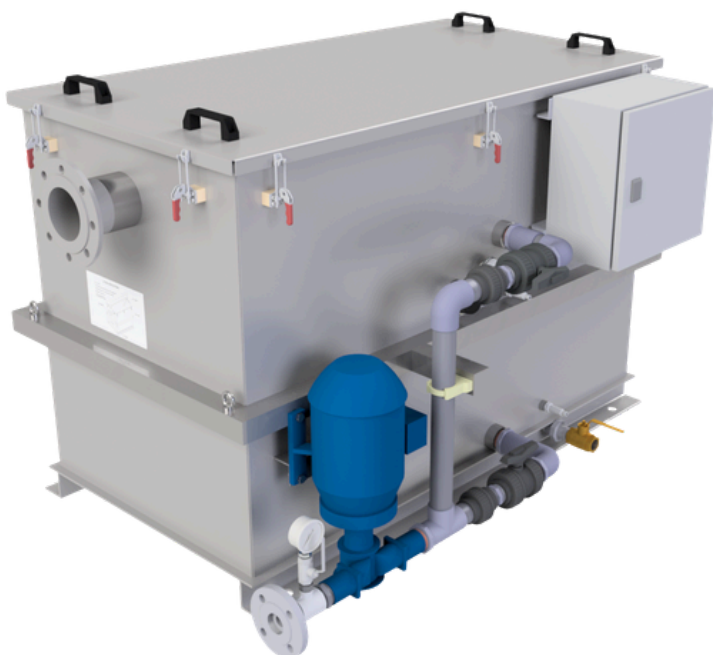


Wärtsilä GM Series Grease Trap

The Wärtsilä Grease Management System is engineered to the highest standards for efficient separation of fats, oils, and grease from marine galley wastewater. Trusted by vessel operators worldwide for reliability, compliance, and ease of maintenance.

Designed for the demanding marine environment, the GM Series delivers proven grease separation performance across a range of vessel types and flow rates. Three configuration options ensure the right solution for every application.



Designed in accordance with BS EN 1825

Fully designed and sized in accordance with the international standard for grease separators.

Gravity-Driven Separation

Passive baffle system requires no energy input for the core separation process - dense solids settle, grease rises, clean water exits.

Three Variants Available

Standard, Heater Only, and Pump & Heater configurations to match operational requirements.

Four Size Options

NS 0.5 through NS 4 nominal flow sizes accommodate galleys from small vessels to large commercial ships.

PRINCIPLE OF OPERATION

Galley Grey Water is gravity fed into the Grease Trap via the inlet pipework. The Grease Trap is designed to have a baffle system that splits into different sections:

Grease Sludge Trap, Grease Separation Zone, Grease Collection Zone. Clean water exits via the immersion pipe and outlet, while grease remains captured for periodic disposal.

TECHNICAL SPECIFICATIONS & DESIGN OPTIONS

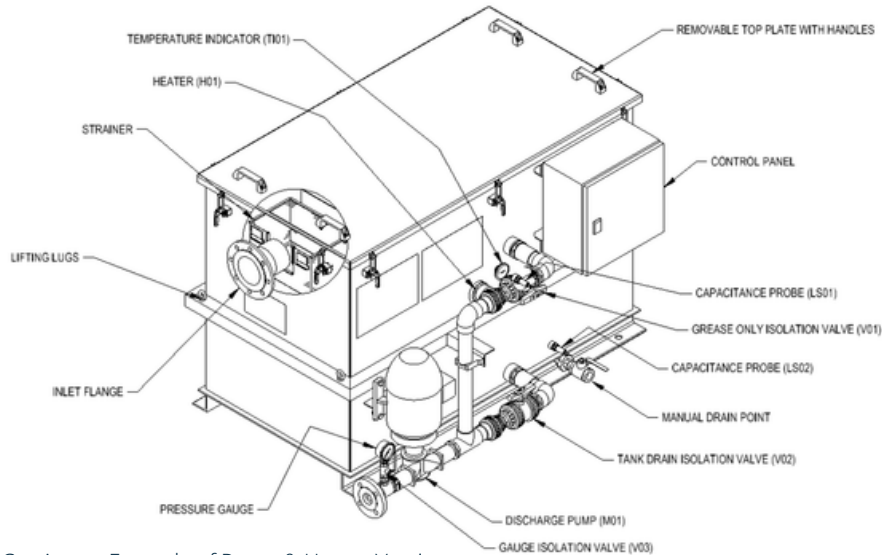


Figure 1: Grease Trap Cut-Away - Example of Pump & Heater Version

Flow Rate Specifications

Size	Nominal Flow Rate	Grease Collection Zone Volume	Grease Separation Zone Volume
NS 0.5	0.5 l/s	0.05 l	0.125 l
NS 1	1 l/s	0.11 l	0.24 l
NS 2	2 l/s	0.23 l	0.48 l
NS 4	4 l/s	0.66 l	1.08 l

Variant Availability by Size

Size	Standard	Heater	Heater & Pump
NS 0.5	✓	✓	x
NS 1	✓	✓	x
NS 2	✓	✓	✓
NS 4	✓	✓	✓

The Heater & Pump variant is available for NS 2 and NS 4 sizes, ideal for larger galleys requiring automated grease discharge.

THREE VARIANTS. ONE SOLUTION.

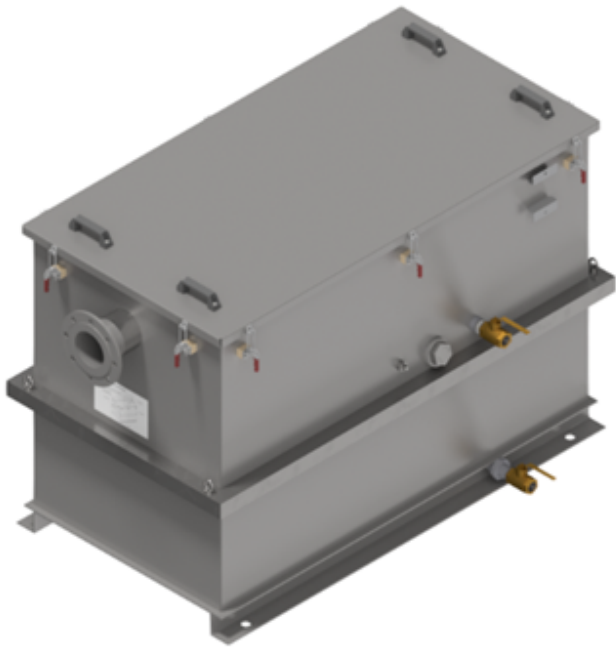


Figure 2: Standard Grease Trap

Standard Grease Trap

Contains two manual drain valves - 1 to remove grease from Grease Collection Zone and one at tank base to drain all tank contents.

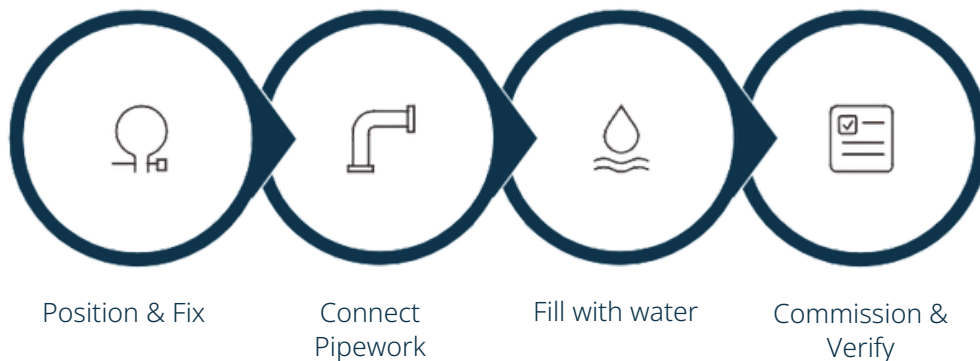
Grease Trap with Heater

Integrated immersion heater with two manual drain valves. Heater allows for reliquification of grease contents for ease of removal via manual drain valve.

Grease Trap with Pump & Heater

Automated grease removal via discharge pump. System controlled via control panel to heat contents and remove either collected grease or full tank contents.

SIMPLE INSTALLATION & COMMISSIONING



The GM Series is designed for straightforward installation.

Mount level with fore-and-aft orientation, connect gravity-fed wastewater inlet (min. 2% gradient), ensure ventilation pipework is connected, and commission with a suitably qualified engineer.