

Super Trident sewage treatment plant

Retrofit RT series

For over four decades the Wärtsilä Super Trident sewage treatment plant has been widely regarded as standard specification on all types of vessels. The Wärtsilä Super Trident plant is certified to meet the new IMO MEPC 227(64) effluent quality standards, which introduced a dilution compensation factor.

The Wärtsilä Super Trident sewage treatment plant is the cost-effective and safe answer to disposing of waste at sea, maintaining the quality of the world's oceans.

The retrofit range has been specifically designed to reduce the cost of installing sewage treatment equipment into existing vessels.

Each size in the retrofit range is built up from three separate water tight tanks connected by external piping, aiding installation. The dimensions of each component has been arranged to permit its transportation through standard vessel access ways.



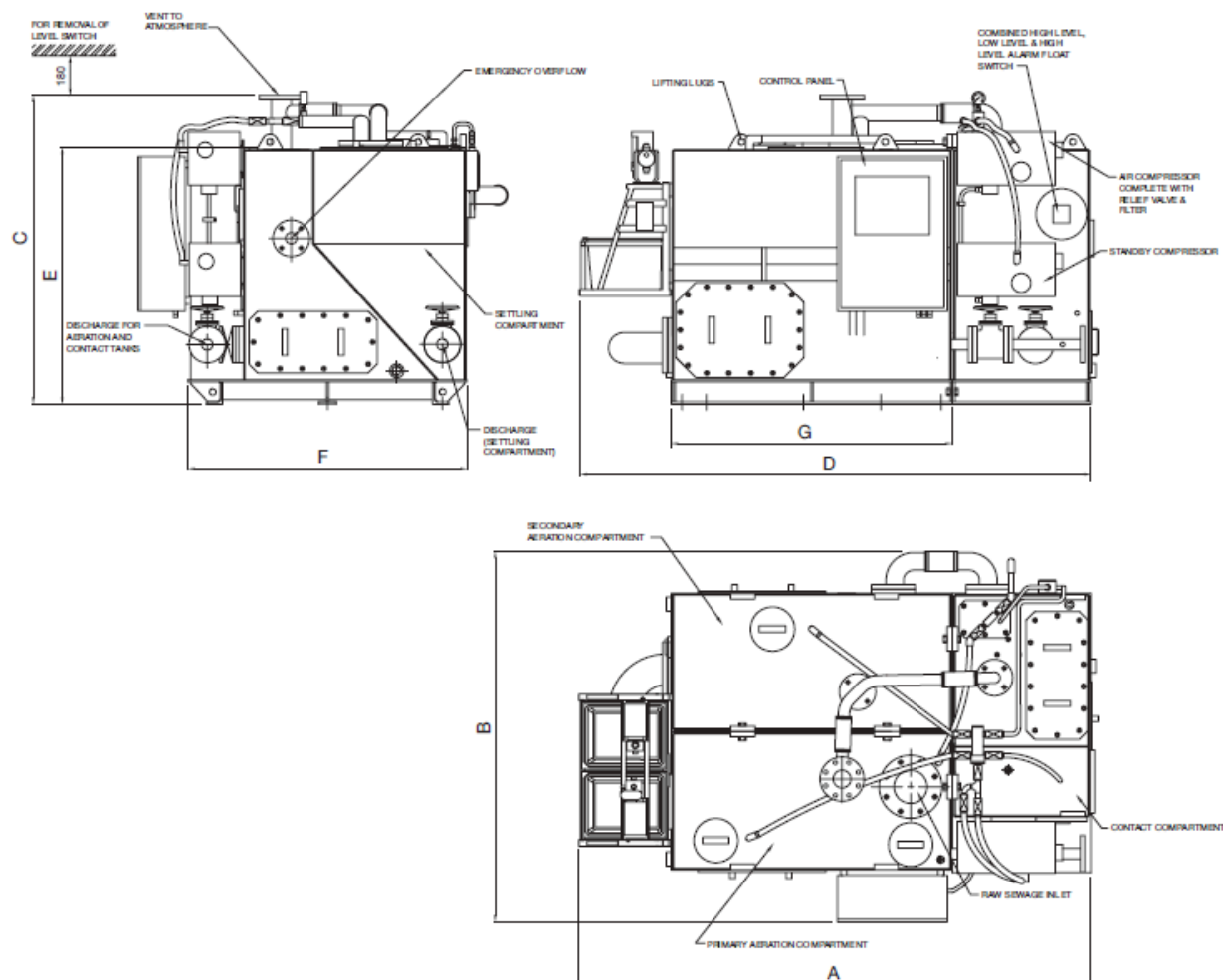
STANDARD FEATURES

- IMO & MED certified
- Modular construction
- Single power supply input point
- Minimal maintenance requirement
- Solids handling Wärtsilä centrifugal discharge pump

OPTIONAL FEATURES

- Standby compressor
- Standby discharge pump

Fig. 1 Detailed elevation drawings



WEIGHTS & DIMENSIONS

Model No.	IMO Certified* (litres/day)	Dimensions (mm)						
		A	B	C	D	E	F	G
RTC20-14	3120	2318	1678	1398	2320	1174	1265	1290
RTC40-14	6010	2518	1835	1847	2520	1624	1415	1415
RTC60-14	9360	3024	2035	1937	3010	1724	1615	1765
RTC80-14	11840	3324	2135	2037	3460	1824	1715	2015

Model No.	Weight Full** (kg)	Size of Aperture (through which unit will pass with tanks separated, transfer tubes and vent tubes attached, and dosing skid removed)		Size of Aperture (through which unit will pass with tanks separated, when the control panel, transfer tubes & studs, dosing skid, vent tubes, flow meter and covers are also removed)	
RTC20-14	3335	867 x 1371		655 x 1220	
RTC40-14	5340	942 x 1821		730 x 1670	
RTC60-14	7690	1042 x 1921		830 x 1770	
RTC80-14	9440	1092 x 2021		880 x 1870	

*IMO certificate issued

**Weights and dimensions based on one pump and one compressor variant