



REVIEW BY THE PRESIDENT & CEO

JAAKKO ESKOLA & HÅKAN AGNEVALL

WÄRTSILÄ'S BOARD OF MANAGEMENT



**ROGER
HOLM**



**TAMARA
DE GRUYTER**



**SEAN
FERNBACK**



**SUSHIL
PUROHIT**



**ARJEN
BERENDS**



**ALID
DETTKE**

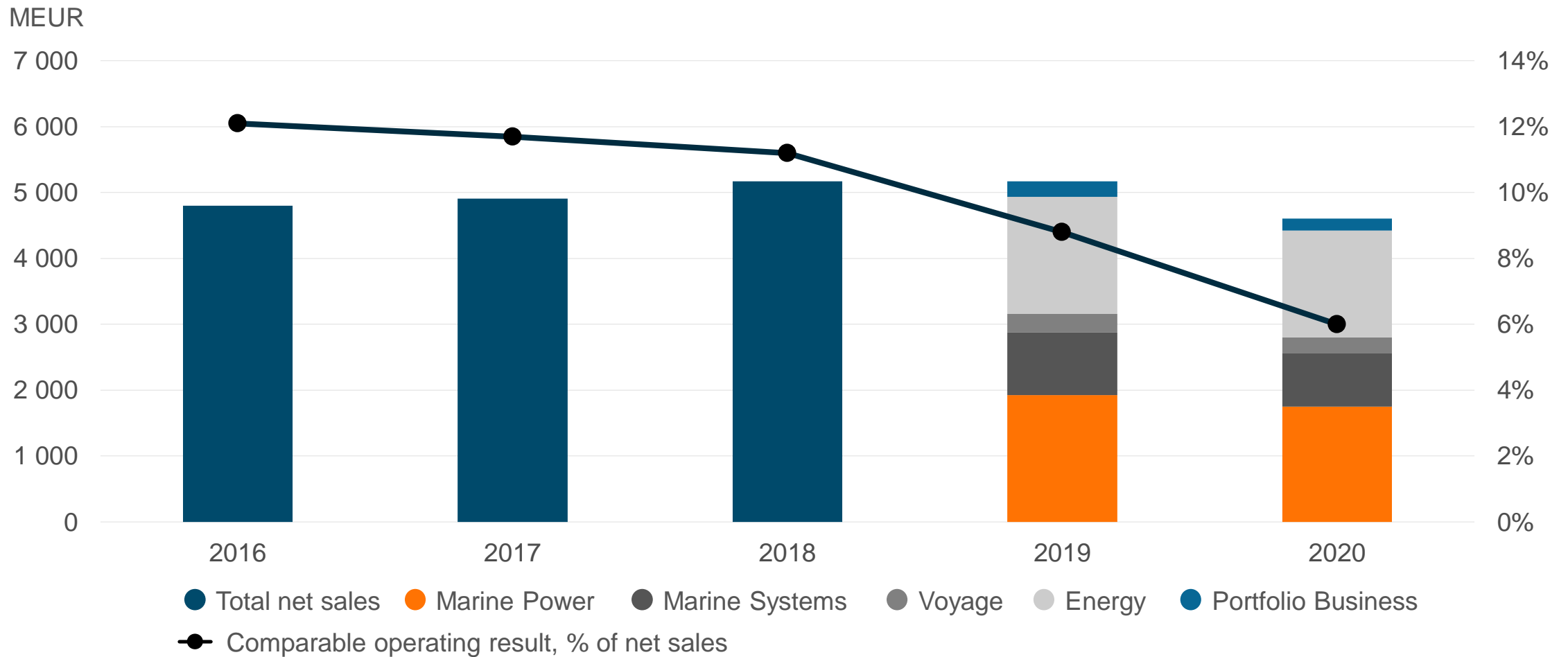


**ATTE
PALOMÄKI**

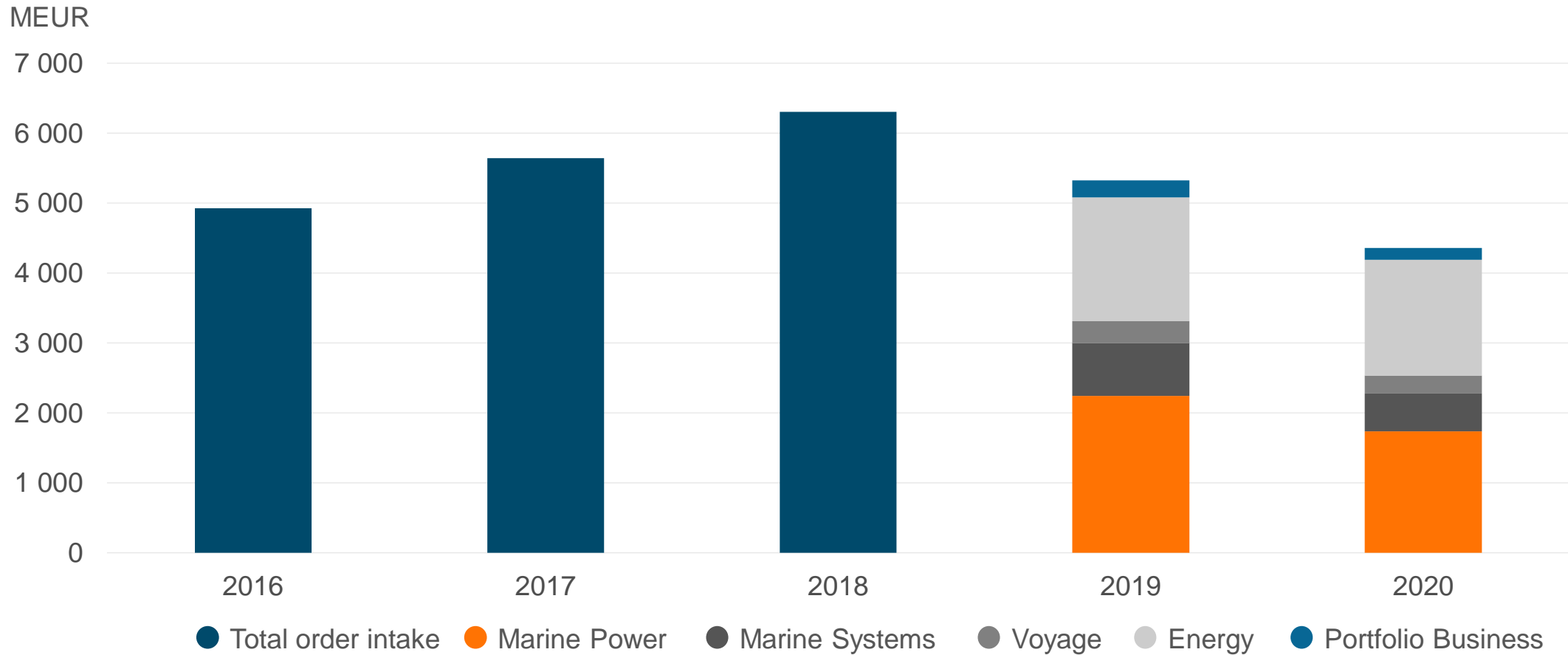


**KARI
HIETANEN**

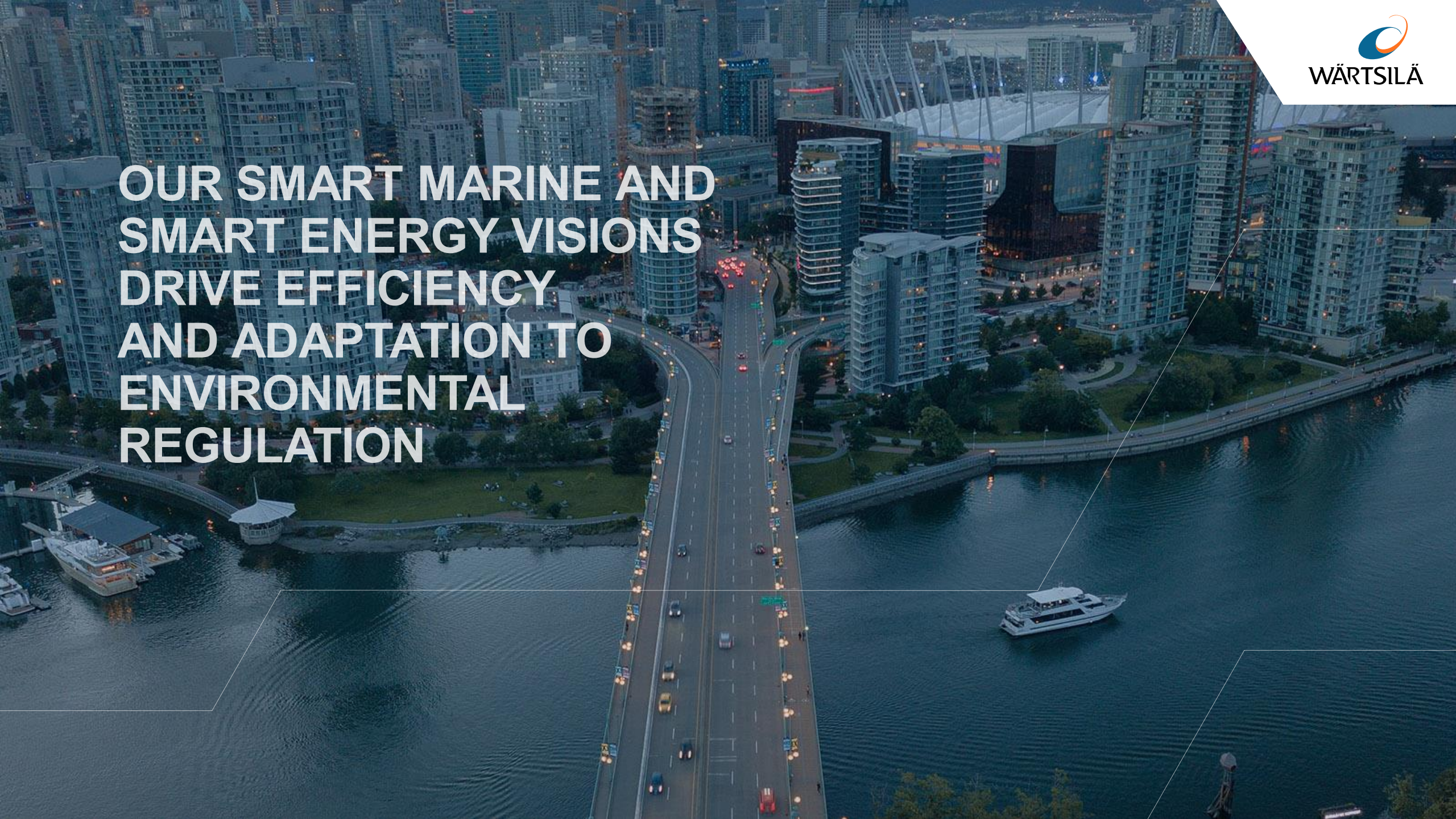
NET SALES AND OPERATING RESULT BURDENED BY MEASURES TAKEN TO CONTAIN COVID-19



ORDER INTAKE DECLINED DUE TO UNCERTAINTY RELATED TO COVID-19 IMPLICATIONS



**OUR SMART MARINE AND
SMART ENERGY VISIONS
DRIVE EFFICIENCY
AND ADAPTATION TO
ENVIRONMENTAL
REGULATION**



BUSINESS STRUCTURE SIMPLIFIED TO IMPROVE THE AGILITY AND SPEED OF DECISION-MAKING

STRENGTHENING
THE LIFECYCLE OFFERING

MARINE POWER

MARINE SYSTEMS

ENERGY

SCALING THE
DIGITAL BUSINESS

VOYAGE

PORTFOLIO BUSINESS

PRIORITISING THE SAFETY OF OUR EMPLOYEES

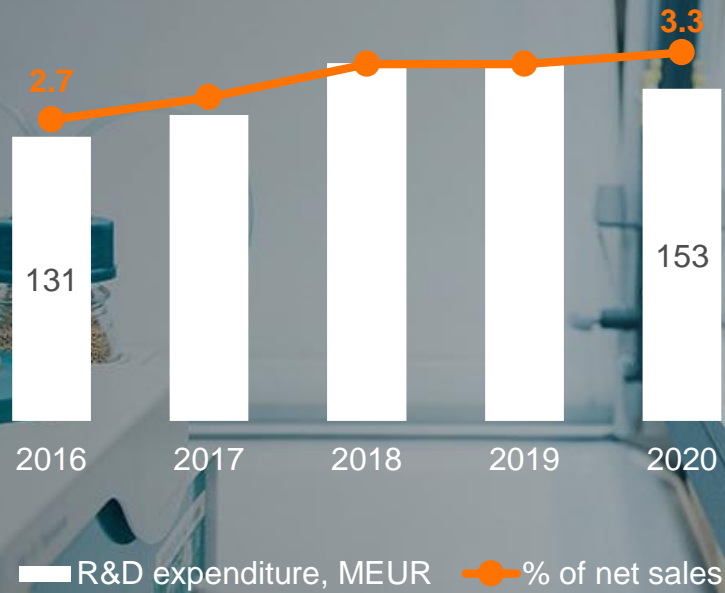


THANK YOU AND
WELCOME, **HÅKAN**

**THE MOST VALUABLE ASSET:
SKILLED AND MOTIVATED
GLOBAL WORKFORCE**


WÄRTSILÄ

R&D FOCUS ON FUEL FLEXIBILITY AND DIGITAL OFFERING





**ENHANCING CARBON NEUTRALITY,
WELLBEING, AND SOCIAL RESPONSIBILITY**

POWERING THE WORLD'S LARGEST NGO HOSPITAL SHIP





**SMART TECHNOLOGY HUB
TO ENABLE NEW WAYS OF
COLLABORATION AND
OPEN INNOVATION**



WÄRTSILÄ'S PROSPECTS

Wärtsilä expects the near-term demand environment to be similar to that of the corresponding period in the previous year.

However, visibility remains limited, and the prevailing market conditions make the outlook uncertain.



THANK YOU



WÄRTSILÄ