

WELCOME TO WÄRTSILÄ VOYAGE SOLUTIONS ACADEMY

Graham Wagstaff

THE SMART MARINE ECOSYSTEM JUST GOT ONE STEP CLOSER

TRANSAS IS NOW PART OF WÄRTSILÄ

FLEET OPERATIONS

SIMULATION AND TRAINING

SHIP TRAFFIC CONTROL

WÄRTSILÄ CONNECTS THE DOTS TO THE FUTURE



Transas Company History

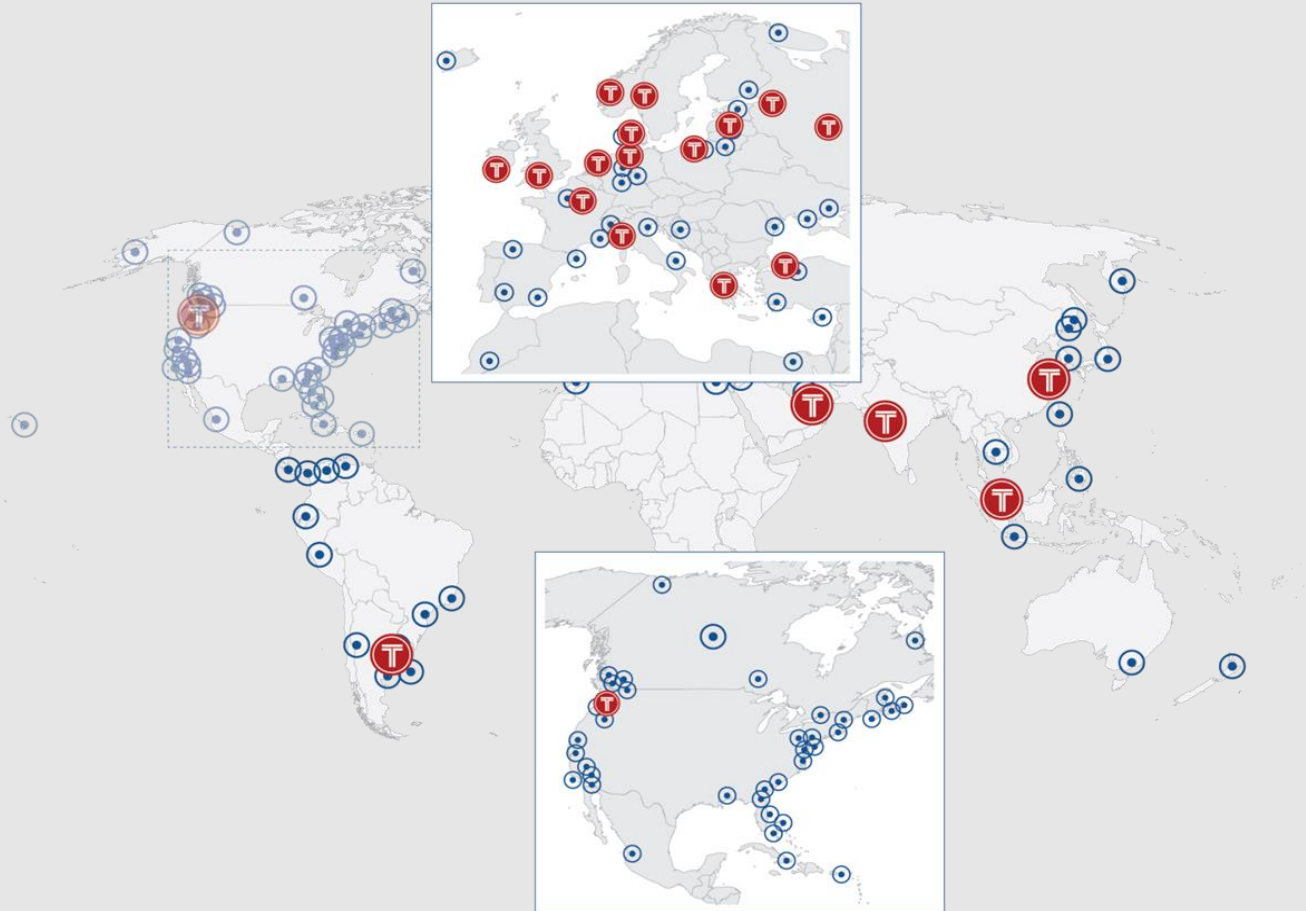
Transas (now Wärtsilä Voyage Solutions)

- **TRANSAS (TRANsport Safety Systems)** was a privately held company focused on development of a wide range of software integrated solutions
- **TRANSAS** held world-leading positions in Maritime : Navigation, Simulation , Shore-based monitoring, Safety and Port Management
- Navigation and Simulation solutions for aviation sector,
- IT-solutions for Defence ,Oil and Gas industry, Railway Transportation and other sectors
- **TRANSAS** Main offices are in Singapore, Saint-Petersburg (Russia), Gothenburg (Sweden), Hamburg, Portsmouth, Antibes, Cork, Melbourne Florida, Seattle.
- Transas was acquired by Wartsila in 2018 and is now Wartsila Voyage Ltd

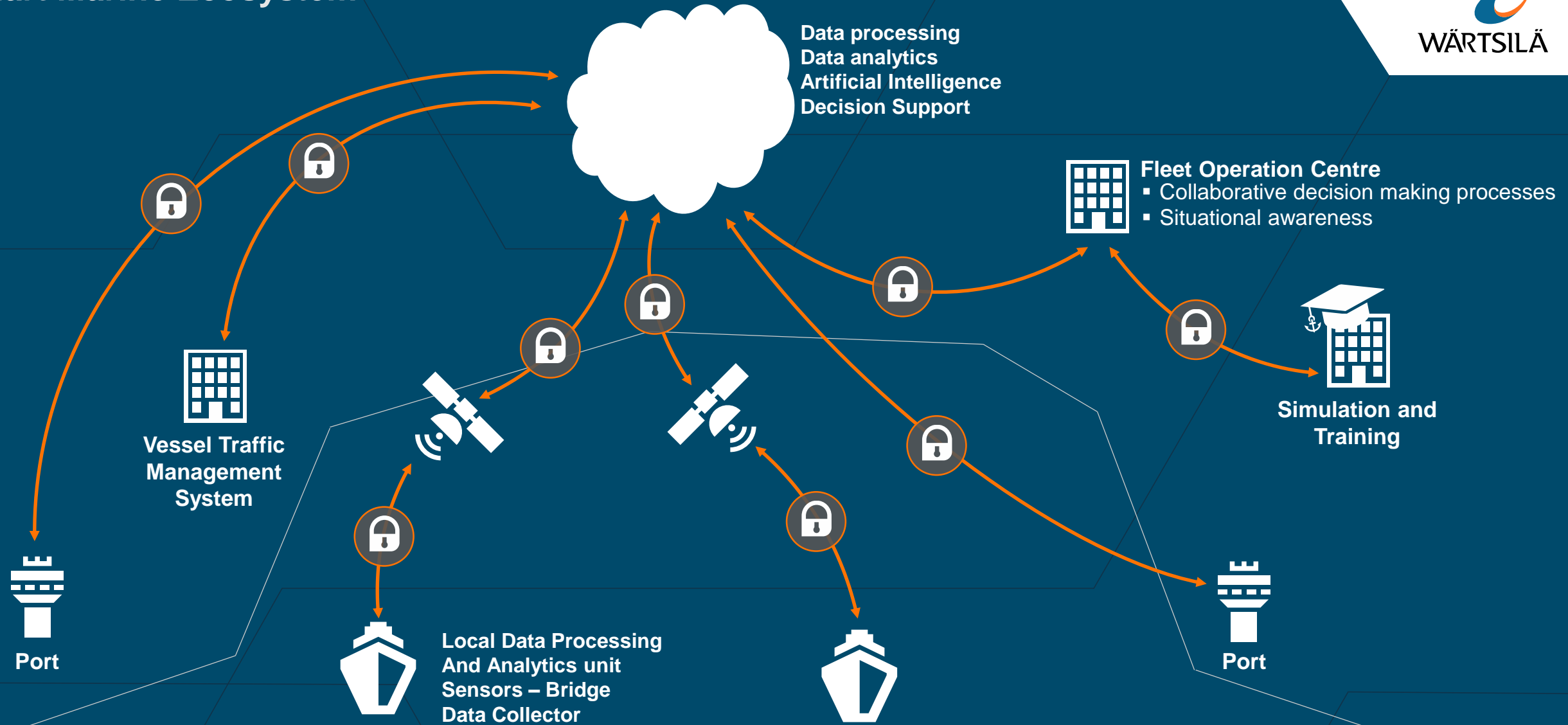
GLOBAL PRESENCE

Global Reach and High Level of Customer Support

At present the Wärtsilä Voyage Solution Headquarters is located in Portsmouth, UK. The company operates 22 own regional offices and has a global network of partners serving Wärtsilä customers around the world.



Smart Marine Ecosystem



VISION

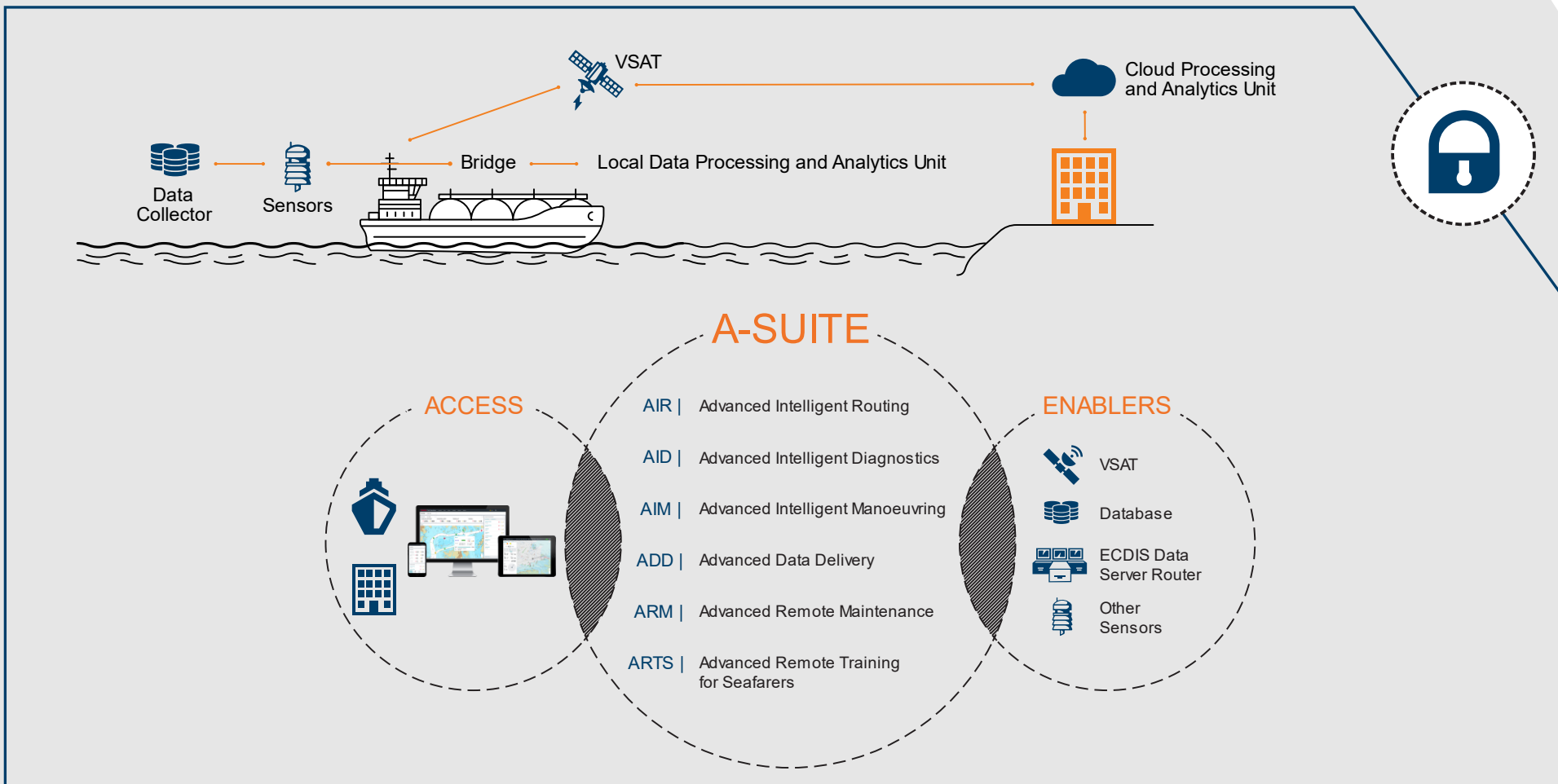
Fleet Operations Solution (FOS) is designed to achieve the highest level of safety at sea, increase fleet efficiency and simplify everyday tasks both ashore and on board.

With FOS, the operations are processed seamlessly, the compliance is guaranteed and the workload and costs are optimized.

Environment

Efficiency

Safety



All tools and data are connected in one operating system with the ECDIS kernel at its core, building the basis for improved operational efficiency and safe processes, with all stakeholders having access to and relying on the same information.

A set of connected intelligent applications inside FOS

Advanced software applications facilitate routine tasks and decrease the workload allowing people to focus on their main objectives.

A-Suite uses artificial intelligence to improve situational awareness and decision support on bridge and ashore.

- Analytics
- Decision Support
- Artificial Intelligence
- Planning
- Maneuvering
- Situational Awareness

A-SUITE

AIR | Advanced Intelligent Routing

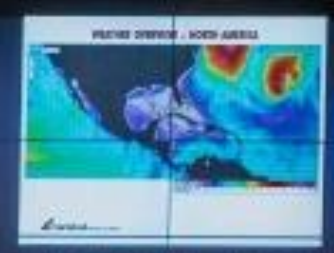
AID | Advanced Intelligent Diagnostics

AIM | Advanced Intelligent Manoeuvring

ADD | Advanced Data Delivery

ARM | Advanced Remote Maintenance

ARTS | Advanced Remote Training
for Seafarers

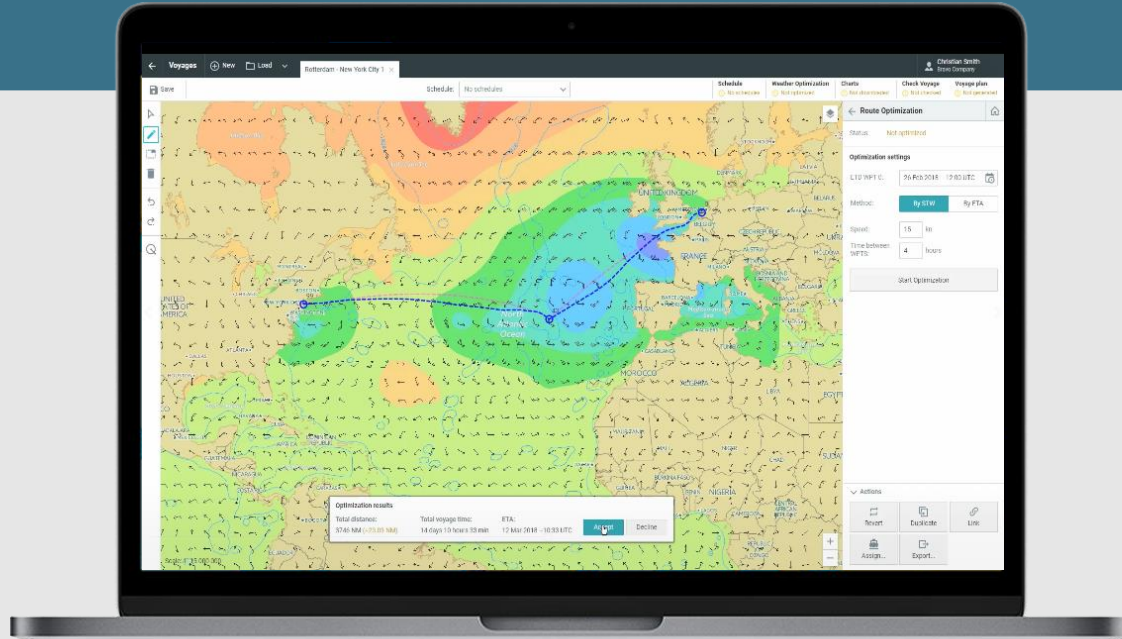


EC
SE

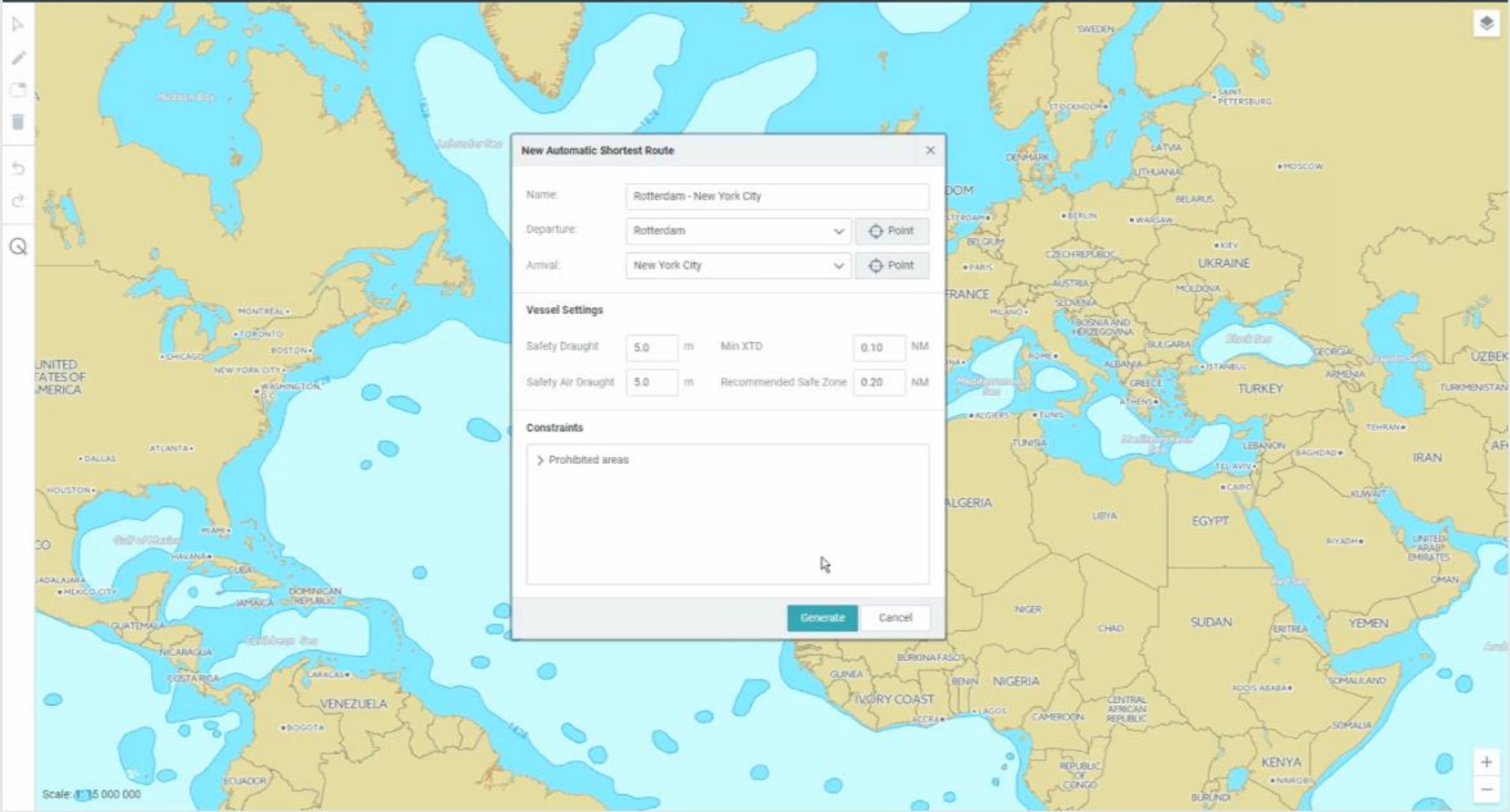
W



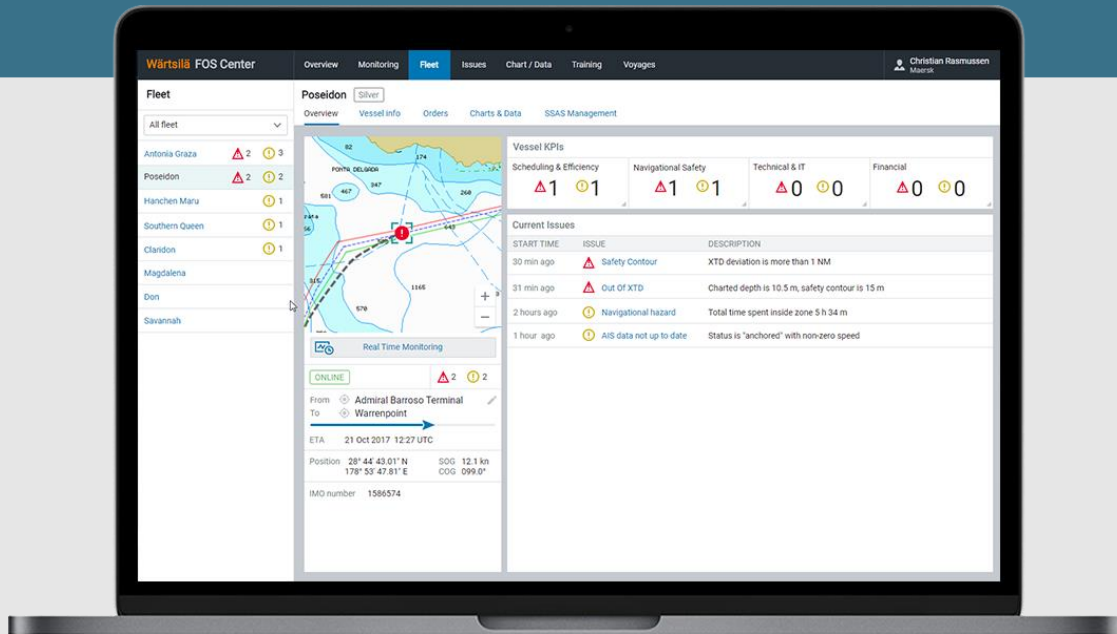
AIR optimizes vessel route according to a variety of metocean data, as well as traffic separation schemes and regional regulations on acceptable fuel types, using artificial Intelligence technologies.



- Automated fastest and safe route generation and update
- Geometric and weather optimization
- Reduced bridge crew workload
- Efficient fuel consumption
- ECDIS integration
- Safety check and Voyage plan documentation.

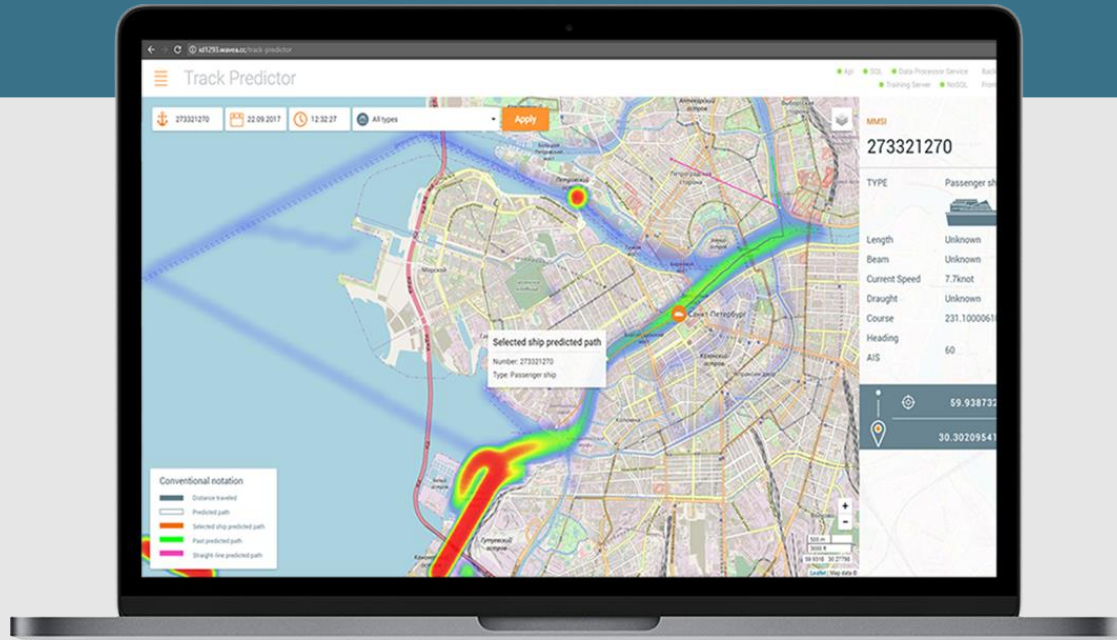


AID detects anomalies, i.e. abnormal, unusual and/or dangerous patterns in ship behaviour, real-time and post voyage, in order to increase situational awareness, eliminate the possibility of human error and eventually, reduce risk.



- Automatic anomaly detection and alerts
- Allows to foresee and prevent dangerous situations, including
 - Excessive / extreme maneuvering
 - Near miss collisions / grounding cases
 - Potential loss of ship stability and cargo shift problems
 - Dangerous hull / machinery loads
 - Ignoring critical navigational alarms

Track prediction designed to improve situational awareness and reduce the probability of officer in-attention or poor judgment leading to an incident.



- 15-20 minutes reliable ship trajectory prediction for the area (98.5% accuracy)
- Recommendations of safe & efficient maneuvers to avoid collisions
- Prediction of potential collision and grounding events
- Identification of safety distance parameters applicable for the area

The best possible protection against cyber attacks

Sophisticated security compliant cloud platform

- Identity control
- Secure infrastructure
- Security applications
- Compliant to the General Data Protection Regulation coming in force May 2018

VPN

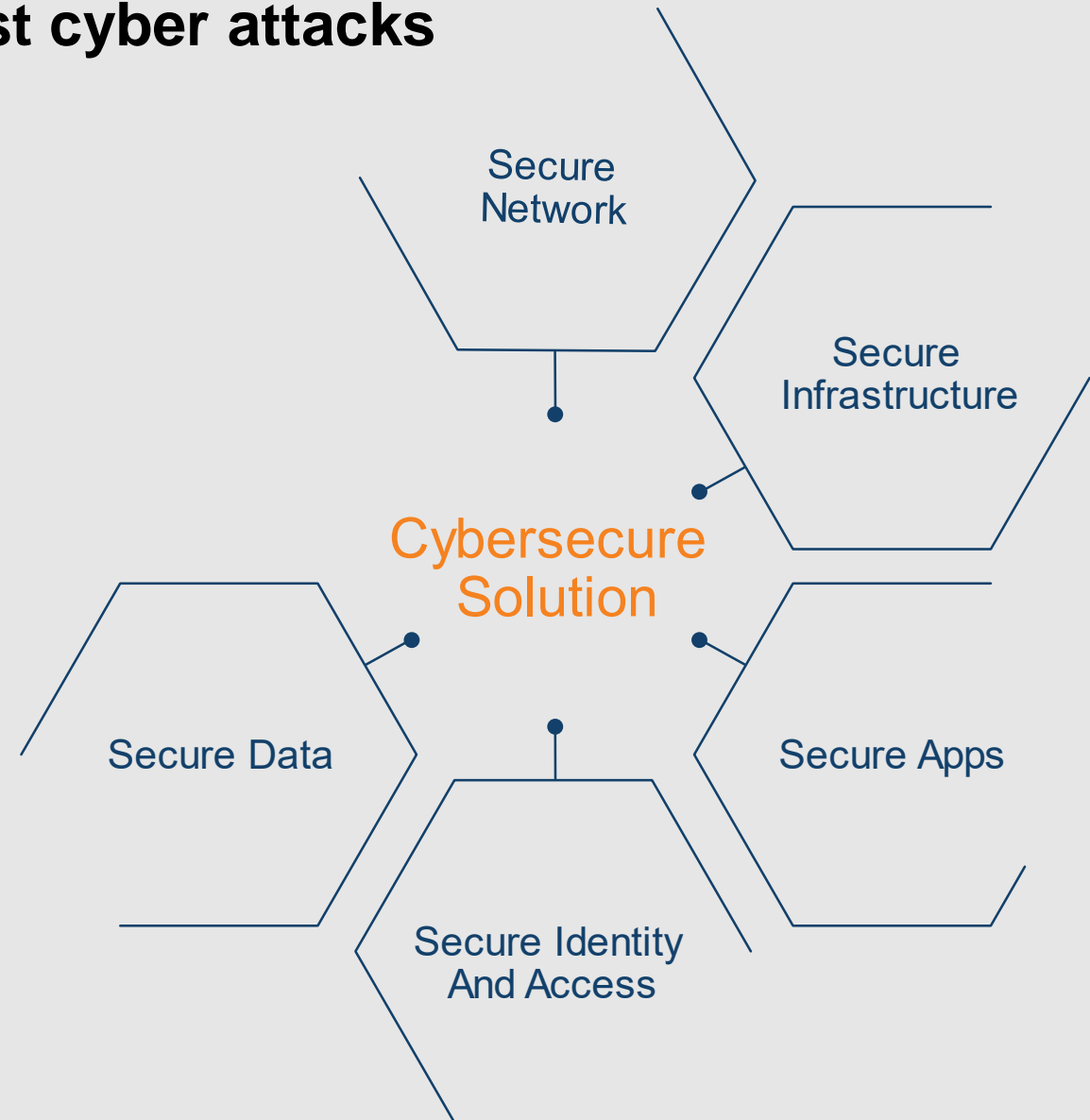
- Firewall IEC 61162-460 standard approved

LAN business segmentation

- Business and private network segmentation with the traffic priority control

Data security validation

- Data integrity and validity checks.



ENHANCED SAFETY & EFFICIENCY ACROSS THE WHOLE VALUE CHAIN

AIR

safest route
up to 5-7% fuel savings
reduced bridge crew workload
just in time arrival at the port

AID

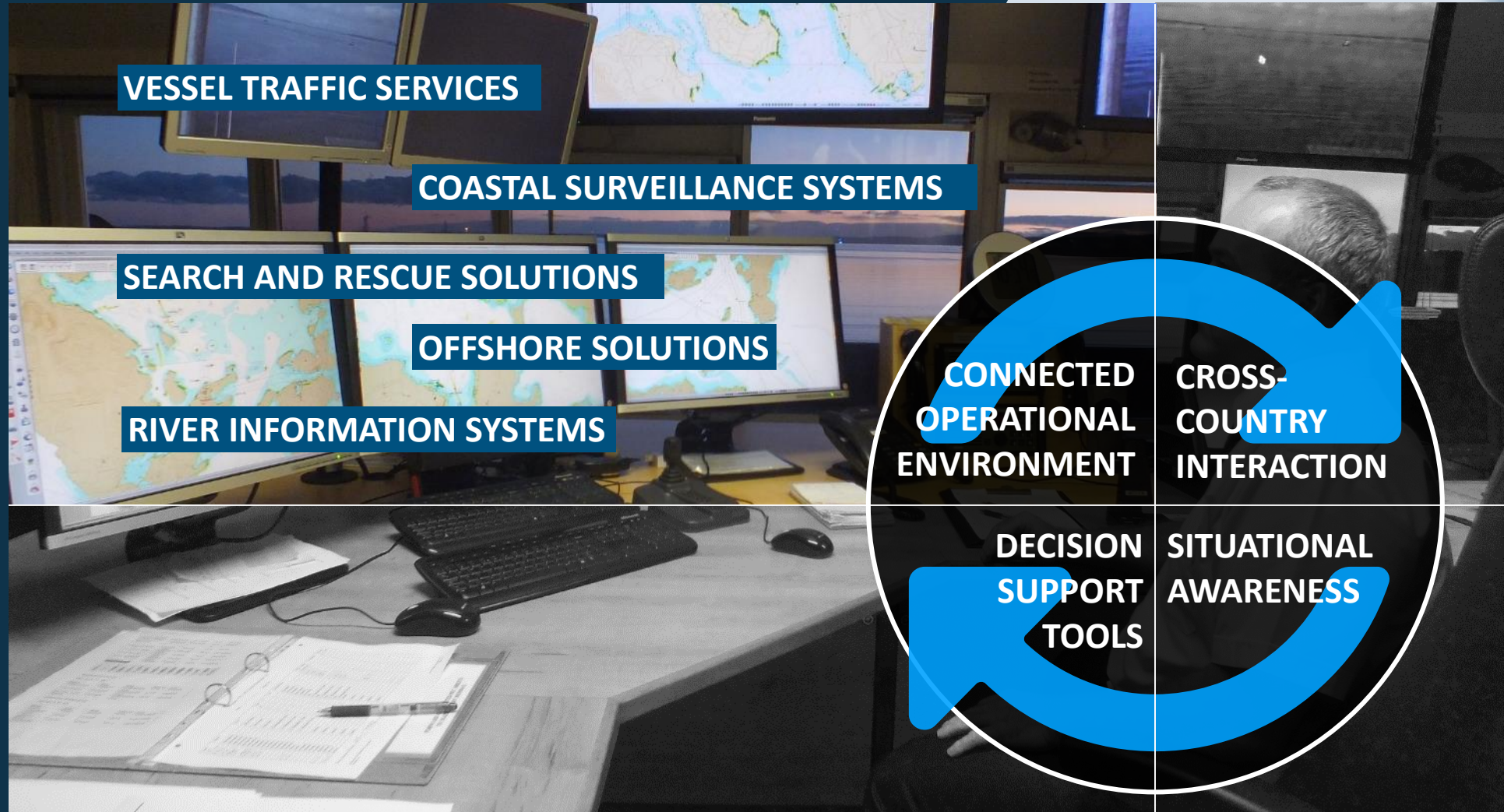
automatic anomaly detection
dangerous situation prevention
analysis of abnormal patterns in
ship and crew behaviour
ad hock trainings

AIM

15-20 min trajectory prediction
reduced risks of collisions
reduced risks of human errors
safety in congested areas

SHIP TRAFFIC CONTROL

Facilitation and co-ordination of vessel traffic and ports



SIMULATION

Bringing technology, expertise and content together



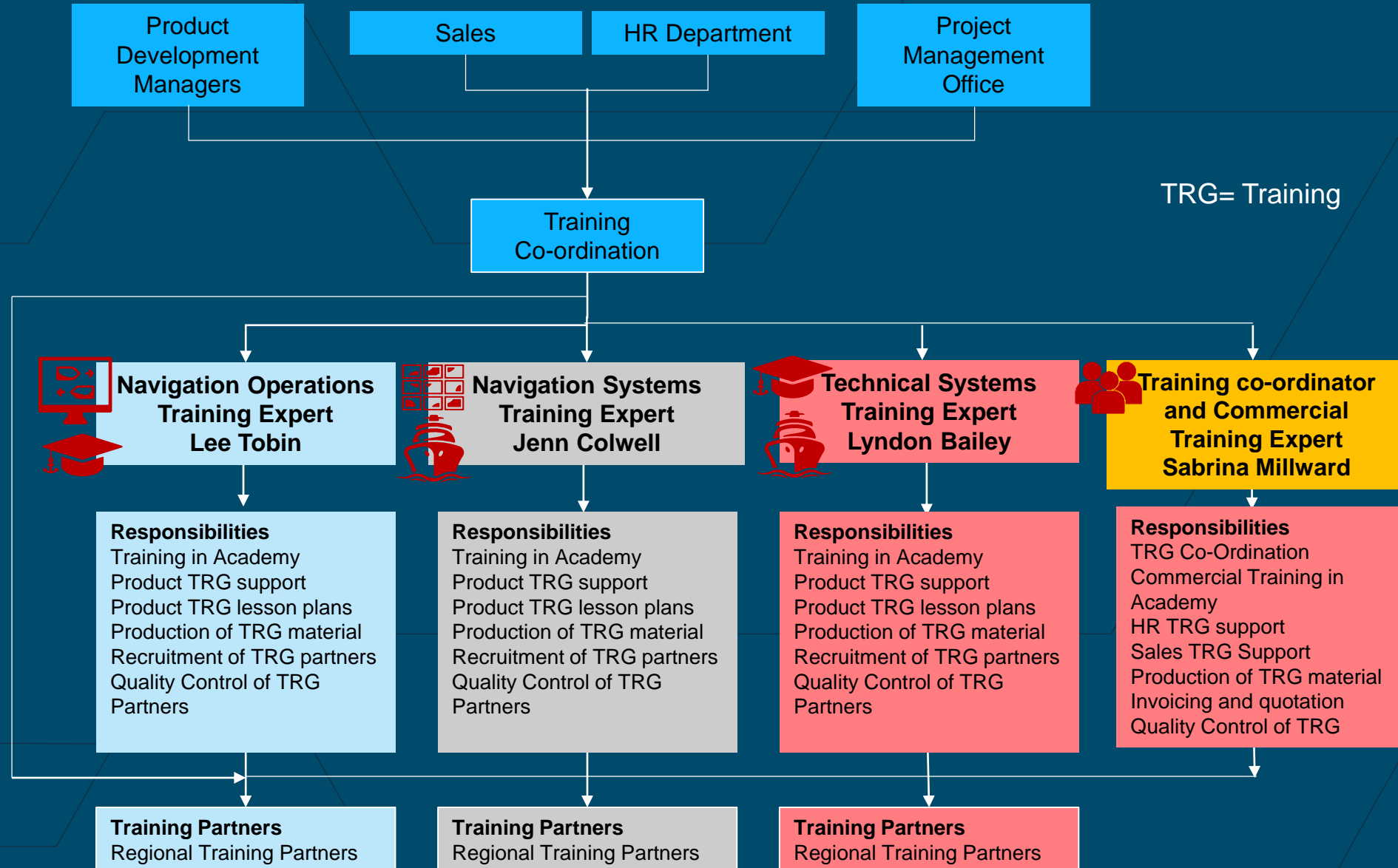
DIGITAL TWIN

Engine Room and Bridge Simulator Models Linked



ER+Bridge=DT

Academy Structure and Workflow



Wärtsilä Voyage Competitors



Market position



**Maritime
simulators**



**Maritime
electronic charts**



**Maritime integrated
navigation systems**



Vessel traffic systems

Thank You for Your Attention